



---

2025

# GUIDE TO THE JUBILEE CHURCHES 2025

---

*The complete guide to the Jubilee  
churches in the Lake Garda area*

---





# **COMMUNITY OF LAKE GARDA**

*Interregional territorial body*

1955-2025

**TEXTS::**

Dott.ssa Ilaria Bazerla, Dott. Pierlucio Ceresa

**PHOTOGRAPHS:**

Archive of the Comunità del Garda, Diocese of Trento, Diocese of Brescia, Diocese of Verona, Diocese of Mantua, Federalberghi Garda Veneto

Finalized in editorial office in April 2025

All Copyright © rights reserved.

# Introduction

## Why the guide to the jubilee churches

The Guide to the Jubilee Churches located in the Garda area is a tool that the Comunità del Garda has created not only to offer tourists, pilgrims, and residents the opportunity to discover which are the Jubilee Churches of Lake Garda, but also to highlight such a significant moment for Christianity and to showcase the many artistic treasures found throughout the Garda region.

Art and Faith have always walked hand in hand, and there could be no better time to emphasize this bond.

In the context of the Holy Year 2025, the Garda territory is experiencing a time of great spiritual meaning. For the Jubilee, several Jubilee churches have been identified across our region—designated places of faith where one can receive the plenary indulgence by passing through the Holy Door, going to confession, participating in the Eucharist, and praying for the intentions of the Pope.

These churches are not only sacred spaces, but also true treasures of art and history, set within a breathtaking landscape that unites spirituality with the beauty of nature.

Visiting the Jubilee Churches of Lake Garda is not only an act of faith but also an inner journey immersed in a landscape that speaks of God through the beauty of creation. The waters of the lake, the mountain profiles, vineyards, lemon groves, and olive trees frame an itinerary that connects the spirit with the body, and culture with devotion.

The Comunità del Garda, in addition to being an interregional body for coordination, environmental protection, and sustainable development, plays an active role in promoting cultural itineraries and projects related to spirituality, in collaboration with dioceses and local administrations. The Jubilee represents a precious opportunity to strengthen the bond between faith and territory, hospitality and welcome.

The Jubilee Churches of Lake Garda therefore offer a special opportunity to experience the Jubilee of 2025 in an extraordinary setting, where the universal message of forgiveness and mercy meets the beauty and history of a timeless land.

Lake Garda, for centuries a crossroads of Peoples and Cultures, presents itself to Italy and the world with a message of Solidarity and Brotherhood among Peoples.

**Sen. Mariastella Gelmini**  
**President of Comunità del Garda**

# WHAT IS THE JUBILEE?

---



“Jubilee” is the name given to a special year. The word appears to derive from the name of the instrument used to mark the beginning of the Jewish festival of the Day of Atonement (Yom Kippur): the yobel, the ram’s horn.

We find the first idea of it in the Bible: it was to be proclaimed every 50 years, as the extra year after seven weeks of years (cf. Lev 25:8–13). It was meant to be a time to restore the right relationship with God, among people, and with creation. It involved the remission of debts, the return of alienated land, and rest for the land.

In 1300, Pope Boniface VIII proclaimed the first Jubilee, also called the “Holy Year,” because it is a time when the holiness of God transforms us. Initially celebrated every 100 years, the interval was reduced to 50 years in 1343 and to 25 years in 1470.

The way the Jubilee has been celebrated has also changed. At first, it involved visiting the Roman basilicas of St. Peter and St. Paul. Later, the pilgrimage became central, and additional symbols were introduced, such as the Holy Door. By participating in the Holy Year, one receives the plenary indulgence.

## THE PAPAL BULL

Tradition holds that every Jubilee is proclaimed through the publication of a Papal Bull of Indiction, which specifies the start and end dates of the Holy Year.

A “Bull” is an official document, generally written in Latin, bearing the Pope’s seal. Each Bull is identified by its opening words. For the Jubilee of 2025, Pope Francis issued the Bull *Spes non confundit*.

## THE DATES OF THE JUBILEE 2025

The Holy Door of St. Peter's Basilica in the Vatican was opened on December 24, 2024, thus marking the beginning of the Ordinary Jubilee.

On the following Sunday, December 29, 2024, in all cathedrals and co-cathedrals, diocesan bishops celebrated the Holy Eucharist as the solemn opening of the Jubilee Year, which will end in dioceses around the world on Sunday, December 28, 2025, while in the Vatican, it will conclude on Sunday, January 6, 2026, the Feast of the Epiphany.

## THE PLENARY INDULGENCE

The ordinary jubilee year 2025 does not include the opening of holy doors in individual dioceses, as was the case in 2016 for the extraordinary jubilee of mercy. The holy doors will be present only in the four papal basilicas in Rome and in one at the Roman prison of Rebibbia, strongly desired by pope Francis. Each diocese, however, may designate certain **jubilee churches** where, throughout the jubilee year, it will be possible to receive the **plenary indulgence**.

### WHAT IS AN INDULGENCE?

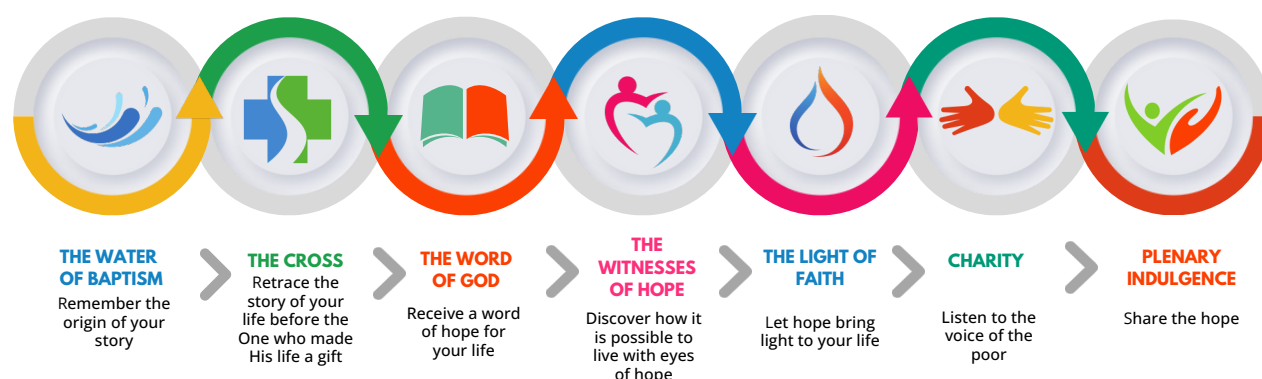
"Although forgiven, we carry within us the contradictions that are the consequences of our sins. In the sacrament of Reconciliation, God forgives sins, which are truly erased; and yet, the negative imprint that sins have left on our behaviors and thoughts remains. But God's mercy is even stronger than this. It becomes the indulgence of the Father, which through the Bride of Christ reaches the forgiven sinner and frees him from every trace of the consequences of sin, enabling him to act with charity and grow in love." Pope Francis, *Misericordiae Vultus* 22

### COME RICEVERE L'INDULGENZA DELL'ANNO SANTO



## HOW TO RECEIVE THE INDULGENCE IN THE DIOCESES

In addition to the means outlined in the bull of indiction, in some jubilee churches within the dioceses it is possible to receive the plenary indulgence throughout the jubilee year by taking part in the **"Journey of Hope."**





# MAP OF PLACES OF FAITH



## INDEX OF COLORS AND SYMBOLS

- DIOCESE OF TRENTO
- DIOCESE OF BRESCIA
- DIOCESE OF MANTOVA
- DIOCESE OF VERONA
- HOUSES OF HOSPITALITY AND SPIRITUALITY



JUBILEE CHURCH



CATHEDRAL,



SANCTUARY





## CATHEDRAL OF SAINT VIGILIUS

*Piazza del Duomo - 38122 Trento*

### How to Get There

The Cathedral is located in the heart of the city, just a few kilometers from the TRENTO SUD exit of the A22 motorway.

Unsupervised parking is available on Via Giovanni Prati, Via Giovanni Battista Borsieri, Via Antonio Rosmini, Via Carlo Esterle, and nearby streets.



Additional guarded parking is available in Piazza Ezio Mosna ("Parcheggio Duomo") and in Piazza Fiera ("Garage Piazza Fiera").

The Cathedral is easily accessible from the train station, located to the right, heading toward the historic center, about 500 meters away.

It can also be reached by bus: all urban lines stop at the station (Piazza Dante stop) and near the Cathedral (Piazza Duomo stop and Via Antonio Rosmini stop).

### OPENING HOURS

Morning: 6:30 AM – 12:00 PM

Afternoon: 2:30 PM – 8:00 PM

### HOLY MASSES

**From September 16, 2024 to June 16, 2025**

#### Sunday and Vigil Masses

Saturday: 7:00 PM

Sunday: 8:15 AM, 10:00 AM

#### Weekday Masses

7:10 AM (except Saturday)

8:15 AM

### CONFESSIONS

Monday to Friday: 9:00–11:00 AM and 4:30–6:30 PM

Saturday: 9:00–11:00 AM and 4:00–6:00 PM

### CONTACTS

☎ **Sacristy Phone:** +39 0461 231293

✉ [info@cattedralesanvigilio.it](mailto:info@cattedralesanvigilio.it)

🌐 [cattedralesanvigilio.it](http://cattedralesanvigilio.it)



### SHRINE OF THE RISING MARY – MONTECASTELLO

Spiritual Retreat House Hermitage of Montecastello: [eremodimontecastello.it](http://eremodimontecastello.it)  
*Via don Domenico Triboldi, 2 (loc. Montecastello) - 25080 Tignale*

#### How to Get There

From Milan: Take the A4 motorway to the Brescia Est exit, then follow the SS45bis (Western Gardesana) in the direction of Salò–Gargnano. From Gargnano, take the SP38 road to Tignale.

From Verona: Take the SS11 to Peschiera del Garda, then follow the SR249 along the eastern shore of Lake Garda up to Malcesine. From there, take the ferry to Limone sul Garda, then continue on the SS45bis to Gargnano and take the SP38 to Tignale.

From Trento: Take the A22 motorway to the Rovereto Sud exit, then follow the SS240 towards Riva del Garda. From Riva, continue on the SS45bis to Gargnano, then take the SP38 to Tignale.

Once in Tignale, the Sanctuary of Montecastello is located about 1 km from the town center. It can be reached on foot via a scenic path or, during certain times of the year, by using a local shuttle service. For updated information on the shuttle schedule and availability, it is advisable to contact the Tignale Tourist Office.



#### OPENING HOURS

From November 2024 to April 2025: only on Saturdays and Sundays from 10:00 to 12:00 and from 14:00 to 16:00.

From Palm Sunday (April 13, 2025) to the Solemnity of All Saints (November 1): every day from 9:30 to 17:30.

#### HOLY MASSES AND CONFESSIONS

Each organized group may celebrate at the Sanctuary by prior arrangement with the office via email.

#### CONTACTS

☎ +39 0365 73019

✉ [parrocchia.tignale@gmail.com](mailto:parrocchia.tignale@gmail.com)

🌐 [eremodimontecastello.it](http://eremodimontecastello.it)



### SHRINE OF OUR LADY OF VALVERDE

*Via Santuario, 79 – 25086 Rezzato*

#### HOW TO GET THERE

From Milan: Take the A4 motorway towards Venice, exit at Brescia Est. Continue on the SP236 towards Rezzato.

From Verona: Take the A4 motorway towards Milan, exit at Brescia Est. Continue on the SP236 towards Rezzato.

From Trento: Take the A22 motorway towards Modena, exit at Rovereto Sud.

Continue on the SS240 towards Riva del Garda, then on the SS45bis towards Salò. From Salò, follow the signs to Rezzato.



- large parking area, also for buses
- possibility to celebrate Mass in the Shrine at times agreed with the rector
- Pilgrim Hall (accommodation for up to 60 people) – with small kitchen
- Sanctuary Bar of Valverde (with outdoor seating area)
- guided (or self-guided) visit to the Rotonda from the year 1024 with ancient frescoes and to the Shrine

#### OPENING HOURS

Every day from 8:00 AM to 7:00 PM (until 8:00 PM in summer)

#### HOLY MASSES

Weekdays and vigil: 4:00 PM (5:00 PM during daylight saving time)

Sundays and feast days: 10:00 AM – 4:00 PM (5:00 PM during daylight saving time)

#### CONFESSIONS

Weekdays: from 10:00 AM to 11:00 AM and from 3:00 PM to 5:30 PM (from 4:00 PM to 6:30 PM during daylight saving time)

Sundays and feast days: from 9:00 AM to 11:00 AM and from 3:00 PM to 5:30 PM (from 4:00 PM to 6:30 PM during daylight saving time)

Note: Group leaders may arrange different times for Holy Masses and Confessions by contacting Don Gino, the rector of the Sanctuary.

#### HOLY ROSARY

Every day 30 minutes before Mass and Saturday evening at 8:00 PM

#### EUCCHARISTIC ADORATION

Every Wednesday 1 hour before Mass

#### CONTACTS

☎ +39 3315646801 (don Gino Regonaschi, Shrine Rector) – 030 2791174 (parish office)

✉ [giovanniregonaschi52@gmail.com](mailto:giovanniregonaschi52@gmail.com) - [rezzatosangiovanniba@diocesi.brescia.it](mailto:rezzatosangiovanniba@diocesi.brescia.it)

🌐 [uprezzatovirle.it](http://uprezzatovirle.it)



## SHRINE OF OUR LADY OF GRACE

*Via delle Grazie, 13 - 25122 Brescia*

### HOW TO GET THERE

Brescia's railway station is the closest to the Sanctuary, located about a 2-minute walk from the church. It is served by numerous regional and national train lines.

For those arriving by car, the Sanctuary is located in a Limited Traffic Zone (ZTL).

It is advisable to park in Via Calatafimi, where a paid parking area is available nearby.



### OPENING HOURS

#### Sundays and feast days

Morning from 7:00 AM to 12:45 PM – Afternoon from 3:00 PM to 6:45 PM

#### Weekdays

Morning from 6:45 AM to 11:30 AM – Afternoon from 3:00 PM to 6:30 PM

### HOLY MASSES

#### Sundays and feast days:

7:30 AM – 9:00 AM – 10:30 AM – 12:00 PM – 4:00 PM – 6:00 PM

#### Saturday vigil Masses:

4:00 PM – 6:00 PM

#### Weekdays:

7:00 AM – 8:00 AM – 10:00 AM – 4:00 PM

On Thursdays only at 4:00 PM

### CONFESSIONS

#### On weekdays:

from 8:00 AM to 11:00 AM (except Thursday)  
from 3:00 PM to 6:00 PM

#### On Sundays and feast days:

from 7:00 AM to 12:30 PM  
from 3:00 PM to 6:30 PM

### HOLY ROSARY

Every day at 3:30 PM

### EUCCHARISTIC ADORATION

Every Thursday from 10:30 AM to 12:00 PM and from 4:30 PM to 6:00 PM

### CONTACTS

+39 030 8036934

[rettore@santuariodellegrazie.brescia.it](mailto:rettore@santuariodellegrazie.brescia.it)

[santuariodellegrazie.brescia.it](http://santuariodellegrazie.brescia.it)



## CATHEDRAL OF BRESCIA

*Piazza Paolo VI - 25121 Brescia*

### HOW TO GET THERE

The Cathedral is located in a Limited Traffic Zone (ZTL). It is advisable to park in nearby paid parking areas, such as:

Parceggio Piazza Vittoria

Parceggio Arnaldo Park (about 900 meters from the Cathedral).



For updated information on parking and fees, please consult the Brescia Mobilità website.

For those arriving by train, the Cathedral can be reached on foot from Brescia Railway Station in about 20 minutes. Alternatively, you can take the metro and get off at the Vittoria stop.

### OPENING HOURS

Monday to Friday: from 7:00 AM to 6:45 PM

Saturdays, Sundays, and feast days: from 7:00 AM to 7:30 PM

### HOLY MASSES

Weekdays: 8:00 AM – 9:00 AM – 6:00 PM

Vigil Masses: 6:30 PM

Sundays and feast days: 9:00 AM – 10:00 AM – 12:00 PM – 6:30 PM

### CONFESSIONS

Weekdays: from 9:00 AM to 11:30 AM and from 3:30 PM to 6:00 PM

Sundays and feast days: from 8:30 AM to 1:00 PM and from 3:30 PM to 6:30 PM

### HOLY ROSARY AND EUCHARISTIC ADORATION

Sundays and Solemnities at 5:30 PM Eucharistic Exposition, 6:00 PM celebration of Vespers

### CONTACTS

☎ **Sacristy Phone:** +39 030 42714 - **Parish office phone:** +39 030 3757037

✉ [cattedraledibrescia@gmail.com](mailto:cattedraledibrescia@gmail.com)





### SHRINE OF MARY MYSTICAL ROSE MOTHER OF THE CHURCH – FONTANELLE

*Via Rampina di San Giorgio, 24 – 25018 Montichiari*

#### HOW TO GET THERE

From Milan: Take the A4 motorway towards Brescia. Exit at Brescia Est and follow the signs to Montichiari. Then follow the signs to Fontanelle.

From Verona: Take the A4 motorway towards Brescia. Exit at Desenzano del Garda and continue towards Montichiari, then follow the signs to Fontanelle.

From Trento: Take the A22 motorway towards Mantua. Exit at Mantova Nord and continue on the SS236 towards Montichiari. Once in Montichiari, follow the signs to Fontanelle.



#### OPENING HOURS

Open 24 hours a day, weekdays and holidays

#### HOLY MASSES

Weekdays: 5:00 PM (summer) or 4:00 PM (winter)

Vigil Masses: 5:00 PM (summer) or 4:00 PM (winter)

Sundays and feast days: 10:30 AM and 5:00 PM (summer) or 4:00 PM (winter)

#### CONFESSIONS

Weekdays: 1 hour before Mass

Sundays/feast days: morning 9:30 AM – 11:30 AM / afternoon 3:00 PM – 6:00 PM

#### HOLY ROSARY

30 minutes before each Mass

#### EUCCHARISTIC ADORATION

1 hour before the Sunday afternoon Mass, the Mass on the 13th of each month, and on solemnities

#### CONTACTS

☎ +39 030 964111

✉ For more informations: [segreteria@rosamisticafontanelle.it](mailto:segreteria@rosamisticafontanelle.it)

Pilgrimages and requests for eucharistic celebrations: [pellegrinaggi@rosamisticafontanelle.it](mailto:pellegrinaggi@rosamisticafontanelle.it)

🌐 [rosamisticafontanelle.it](http://rosamisticafontanelle.it)

# MANTOVA



## CO-CATHEDRAL OF SAINT ANDREW THE APOSTLE

Also designated as the Sanctuary of the Most Precious  
*Piazza Andrea Mantegna, 1 – 46100 Mantua*

### HOW TO GET THERE

The basilica is located in a Limited Traffic Zone (ZTL). It is advisable to park in one of the paid parking areas near the historic center and proceed on foot.

For those arriving by train, the Mantua Railway Station is the closest to the basilica. From the station, the basilica can be reached::



- on foot: about 15–20 minutes through the historic center
- or by public transport. The following bus lines stop near the Basilica of Saint Andrew: 4C, 4S, 4T, 6, 7E, CC (City Circular), among others.

### OPENING HOURS

Every day: from 8:00 AM to 7:00 PM

### HOLY MASSES

Weekdays: 9:30 AM

Vigil Mass: 6:30 PM

Sundays and feast days: 8:30 AM / 10:30 AM

### CONTACTS

☎ +39 0376 328504

✉ [s.andrea@diocesidimantova.it](mailto:s.andrea@diocesidimantova.it)

🌐 [parrocchiasantanselmomantova.it](http://parrocchiasantanselmomantova.it)



# SAN FELICE DEL BENACO (BS)



## SHRINE OF OUR LADY OF MOUNT CARMEL

Guest House "Al Carmine": [carminesulgarda.it](http://carminesulgarda.it)  
Via Carmine, 11 – 25010 San Felice del Benaco  
Order of the Carmelite Fathers O.Carm.

## HOW TO GET THERE

The Shrine can be reached by car:  
from Milan: A4 motorway towards Venice,  
exit at Desenzano del Garda from Verona: A4  
motorway towards Milan, exit at Desenzano  
del Garda from Trento: A22 motorway  
towards Modena, exit at Rovereto Sud.  
Continue on the SS240 towards Riva del  
Garda, then on the SS45bis to Salò. The  
Shrine is also reachable by bus from the  
railway stations of Brescia or Desenzano.



## OPENING HOURS

Winter: weekdays from 7:00 AM to 6:00 PM / Sundays and feast days from 7:45 AM to 6:30 PM

Summer: weekdays from 7:00 AM to 8:00 PM / Sundays and feast days from 6:45 AM to 10:15 PM

## HOLY MASSES

*Winter (from mid-September to mid-June):*

weekdays: 8:00 AM – 5:00 PM

Sundays and feast days: 7:30 AM – 10:00 AM – 5:00 PM

*Summer (from mid-June to mid-September):*

weekdays: 8:00 AM – 6:00 PM

Sundays and feast days: 7:30 AM – 10:00 AM – 6:00 PM – 9:00 PM

## CONFESSIONS

Winter: weekdays from 10:00 AM to 12:00 PM and from 4:00 PM to 6:00 PM

Sundays and feast days from 9:30 AM to 12:00 PM

Summer: weekdays from 10:00 AM to 12:00 PM and from 3:30 PM to 6:30 PM

Sundays and feast days from 9:30 AM to 12:00 PM; from 3:30 PM to 6:30 PM; from 8:30 PM to 9:30 PM

## HOLY ROSARY

Winter: Wednesday 7:15 PM / Saturday 4:15 PM / Sunday 4:00 PM

Summer: Wednesday 7:15 PM / Saturday 5:15 PM / Sunday 5:00 PM

## EUCCHARISTIC ADORATION

Winter: Tuesday 4:00 PM / Wednesday 9:15 PM / Sunday 3:50 PM

Summer: Tuesday 5:00 PM / Wednesday 5:00 PM / Sunday 4:50 PM

## CONTACTS

☎ +39 0365 557058

✉ [santuariocarmine.sfb@gmail.com](mailto:santuariocarmine.sfb@gmail.com)

🌐 [santuariodelcarmine-sanfelice.it](http://santuariodelcarmine-sanfelice.it)

# LONATO DEL GARDA (BS)



## BASILICA OF THE NATIVITY OF SAINT JOHN THE BAPTIST

*Via Tarello – 25017 Lonato del Garda*

### HOW TO GET THERE

From Milan: A4 motorway towards Venice, exit at Desenzano del Garda and follow signs to Lonato del Garda

From Verona: A4 motorway towards Milan, exit at Desenzano del Garda

From Trento: A22 motorway towards Modena, exit at Rovereto Sud. Continue on the SS240 towards Riva del Garda, then on the SS45bis to Salò



### OPENING HOURS

Every day from 7:30 AM to 7:00 PM

### HOLY MASSES

Weekdays: 8:00 AM – 6:30 PM

Vigil Masses: 6:30 PM

Sundays and feast days: 8:00 AM – 10:30 AM – 6:30 PM

### CONFESSIONS

Fridays from 4:00 PM to 6:00 PM

Saturdays from 9:00 AM to 12:00 PM

### HOLY ROSARY

Every day at 5:30 PM

### EUCCHARISTIC ADORATION

Thursdays from 5:30 PM to 6:30 PM

### COMMUNITY PENITENTIAL CELEBRATION

The last Wednesday of the month at 8:30 PM, led by the Comunità Magnificat, on the following dates:

January 29, February 26, March 26, April 30, May 28,  
June 25, September 24, October 29, November 26

### CONTACTS

☎ +39 030 964111

✉ [info@parrocchialonato.it](mailto:info@parrocchialonato.it)

🌐 [parrocchialonato.it](http://parrocchialonato.it)



### MERICIANUM SPIRITUALITY CENTER

Retreat house for spiritual retreats and prayer gatherings: [mericianum.com](http://mericianum.com)

*Località Brodazzo - 25015 Desenzano del Garda*

*Ursuline Sisters of St. Charles*

The center is located in a place of great importance for Merician spirituality, near the site of the vision of Saint Angela Merici, founder of the Company of Saint Ursula.

It is managed by the Ursuline Sisters of St. Charles and offers an environment of silence and prayer, ideal for spiritual retreats, biblical courses, and moments of personal formation.

### HOW TO GET THERE

From Brescia: Follow the SS11 to Lonato, then take the directions to Padenghe and Salò. Continue on the SS572 towards Salò. At the locality of Massadrino, turn right following the brown sign "Mericianum".

From Trento: Take the A22 to Verona, then the A4 towards Milan. Exit at Desenzano del Garda and follow the signs for Salò along the SS572. At the locality of Massadrino, turn left following the brown sign "Mericianum".

By train: get off at Desenzano del Garda Station. From the station, a taxi service is available at +39 030 9141527 to reach the center.



### SERVICES FOR PILGRIMS

The Mericianum offers:

- Single and double rooms, all with private bathrooms
- Accessibility for people with disabilities
- Three chapels for personal and communal prayer
- A conference hall and several meeting rooms
- A large park and on-site parking
- Spiritual programs: spiritual retreats, biblical courses, lectio divina, and formation meetings

### CONTACTS

☎ +39 030 9120356

✉ [info@mericianum.com](mailto:info@mericianum.com)

🌐 [mericianum.com](http://mericianum.com)



## SHRINE OF OUR LADY OF THE FRASSINO

*Località Frassino, 4 - 37019 Peschiera del Garda*

*Order of Friars Minor (OFM)*

### HOW TO GET THERE

From Milan: Take the A4 motorway towards Venice, exit at Peschiera del Garda and follow the signs to the sanctuary, located about 2 km from the exit along State Road 11.

From Verona: Take the A4 motorway towards Milan, exit at Peschiera del Garda and follow the signs to the sanctuary.

From Trento: Take the A22 motorway towards Modena, exit at Affi, then follow SP9 towards Peschiera del Garda.



The shrine has a large free parking area available for visitors.

### OPENING HOURS

Every day from 6:30 AM to 12:00 PM and from 3:00 PM to 7:30 PM

### HOLY MASSES

Weekdays: 7:30 AM – 9:00 AM – 6:30 PM; Vigil Mass at 6:30 PM

Sundays and feast days from September to April: 7:00 AM – 8:30 AM – 10:00 AM – 11:30 AM – 4:00 PM – 5:00 PM – 6:30 PM

Sundays and feast days from May to August: 7:00 AM – 8:30 AM – 10:00 AM – 11:30 AM – 5:00 PM – 6:30 PM

### CONFESSIONS

Weekdays: from 8:30 AM to 11:45 AM and from 3:00 PM to 6:30 PM

Sundays and feast days: from 6:45 AM to 12:00 PM and from 3:30 PM to 7:00 PM

### HOLY ROSARY

Every day at 6:00 PM

### EUCCHARISTIC ADORATION

Thursday afternoon from 5:00 PM to 6:00 PM

### CONTACTS

☎ +39 045 7550500

✉ [info@santuariodelfrassino.it](mailto:info@santuariodelfrassino.it)

🌐 [santuariodelfrassino.it](http://santuariodelfrassino.it)



# FERRARA DI MONTE BALDO (VR)



## SHRINE OF OUR LADY OF THE CROWN

*Località Santuario, 1 (Spiazzi) - 37020 Ferrara di Monte Baldo*

### HOW TO GET THERE

From Milan or Venice: Take the A4 motorway, exit at Peschiera del Garda. Continue in the direction of Spiazzi, following signs for Caprino Veronese and then Spiazzi.

From Trento or Modena: Take the A22 motorway (Brennero–Modena), exit at Affi. Continue in the direction of Spiazzi, following signs for Caprino Veronese and then Spiazzi.



Once in Spiazzi, you can park in the available lots in the town. From there, the sanctuary can be reached on foot in about 15 minutes downhill. Alternatively, a paid shuttle service provided by ATV operates from spring to autumn, connecting Spiazzi to the sanctuary. Timetables available here:

<https://www.atv.verona.it/servizi-turistici/santuario-madonna-della-corona>

The Shrine can also be reached on foot from Spiazzi or from Brentino Belluno by hiking the “Sentiero della Speranza” (Path of Hope).

### OPENING HOURS

From November to March: every day from 8:00 AM to 6:30 PM

From April to October: every day from 7:00 AM to 7:30 PM

### HOLY MASSES

Winter: weekdays at 10:30 AM / Thursdays at 3:30 PM

Saturdays: 10:30 AM – 5:00 PM (vigil Mass)

Sundays and feast days: 10:30 AM – 3:00 PM

Summer: weekdays at 10:30 AM – 3:30 PM

Saturdays: 10:30 AM – 5:00 PM (vigil Mass)

Sundays and feast days: 9:00 AM – 10:30 AM – 12:00 PM – 3:00 PM – 4:30 PM

### CONFESSIONS

Every day in the Chapel of Confessions

### HOLY ROSARY

Every day at 10:00 AM before Mass

### EUCCHARISTIC ADORATION

Every day in the Chapel of Adoration

### CONTACTS

☎ +39 045 7220012

✉ [info@madonnadellacorona.it](mailto:info@madonnadellacorona.it)

🌐 [madonnadellacorona.it](http://madonnadellacorona.it)



### RESIDENCE “STELLA ALPINA”

*Piazzale Giovanni Paolo II – 37010 Spiazzi di Ferrara di M. Baldo*

Just a few steps from the Sanctuary of Madonna della Corona, nestled in a mountain landscape overlooking the Adige Valley. This facility, owned by the Sanctuary, is designed to welcome pilgrims, families, and groups seeking a peaceful and spiritually enriching stay.

The hotel is connected to the Sanctuary of Madonna della Corona via a shuttle service, making it easy to participate in religious celebrations and spiritual activities. It is ideal for retreats, spiritual exercises, and pilgrimages.



### HOW TO GET THERE

From Verona: take the A22 towards Brennero, exit at Affi–Lago di Garda Sud, continue on the SS249 Gardesana Orientale northbound to Spiazzi.

From Brescia: take the A4 motorway towards Verona, exit at Affi. Follow the signs for Caprino Veronese, then continue along the SP8 del Baldo following the signs to Spiazzi.

By public transport: take the train to Verona Porta Nuova Station, then bus line 163 to Garda, and from there line 484 to Spiazzi.

### SERVICES FOR PILGRIMS

- Rooms: standard rooms, junior suites, and superior suites, some with kitchenette
- Accessibility: rooms equipped for guests with disabilities
- Restaurant: local cuisine with half-board or full-board options
- Common areas: 150-seat conference hall, restaurant hall, group rooms, bar-café, large porch, and garden
- Additional services: free Wi-Fi, parking for cars and buses, bicycle rental

### CONTACTS

☎ +39 045 6247082

✉ [info@stellaalpinahotel.eu](mailto:info@stellaalpinahotel.eu)

🌐 [stellaalpinahotel.eu](http://stellaalpinahotel.eu)

## CASTELLETTO DI BRENZONE (VR)



### **INSTITUTE OF THE LITTLE SISTERS OF THE HOLY FAMILY**

Hospitality House Garda Family House: [gardafamilyhouse.it](http://gardafamilyhouse.it)

*Via Beato Giuseppe Nascimbeni, 6 - 37010 Castelletto di Brenzone*

*Little Sisters of the Holy Family*

Founded on November 6, 1892, by Blessed Giuseppe Nascimbeni and Saint Maria Domenica Mantovani, the Institute has a Mother House set in a beautiful natural setting. While it is not a sanctuary, it offers an ideal environment for moments of reflection and spirituality.



### **HOW TO GET THERE**

From Verona: take the A22 motorway and exit at Affi. Follow the signs for Garda, then continue along the Gardesana road to Castelletto di Brenzone.

From Brescia: take the A4 motorway and exit at Peschiera del Garda. Follow the SR249 along the eastern shore of Lake Garda northbound to Castelletto di Brenzone.

From Trento: take the A22 motorway and exit at Rovereto Sud. Continue on the SS240 to Mori, then follow the SR249 southbound along the eastern shore of the lake to Castelletto di Brenzone.

### **SERVICES FOR PILGRIMS**

The Institute offers religious hospitality in various locations. The Garda Family House in Castelletto di Brenzone offers:

- Restaurant with local cuisine and continental breakfast included
- Bar and lounge area
- Game room, gym, outdoor sports field, and cinema room
- Business center for events and meetings
- Free on-site parking
- E-bike rental directly from the facility

The institute also offers hospitality at the Padre Nascimbeni holiday house in torri del benaco: [casa-vacanza-padre-nascimbeni.it](http://casa-vacanza-padre-nascimbeni.it)

### **CONTACTS**

☎ +39 045 6598700

✉ [info@gardafamilyhouse.it](mailto:info@gardafamilyhouse.it)

🌐 [gardafamilyhouse.it](http://gardafamilyhouse.it)



# ALBARÈ DI COSTERMANO SUL GARDA (VR)



## SALESIAN HOUSE SACRED HEART INSTITUTE

Educational Community: [salesianibardolino.it/villaggio-educativo-dab/casa-don-bosco/](https://salesianibardolino.it/villaggio-educativo-dab/casa-don-bosco/)  
*Via Villa, 12 – 37010 Albarè di Costermano sul Garda*

The “Casa Don Bosco” is a residential educational community for minors, active since 2011, that can host up to eight male minors between the ages of 11 and 18.

In addition to this, there is the San Domenico Savio Day Educational Community and the Michele Magone Hostel, which serve young adults who, having left educational communities, need a place to prepare and strengthen their independence.

For the hospitality of large groups or families, the Salesians offer the Tusini facility in Bardolino.



## HOW TO GET THERE

From Verona: A22 towards Brennero, exit at Affi and continue on SS249 Gardesana Orientale northbound to Costermano sul Garda.

From Brescia: A4 towards Verona, exit at Peschiera del Garda.

## SERVICES FOR PILGRIMS

- 4 dormitories with 17 beds each and three small rooms for group leaders or assistants for a total of 65 beds, all equipped with bathrooms and showers
- 9 double rooms in a more private area for a total of 18 beds, to support hosted groups or accommodate smaller groups or families
- 1 fully equipped kitchen with all the tools and equipment necessary for group meal preparation
- 2 multipurpose halls
- 1 large courtyard with soccer, basketball, and volleyball fields with an adjoining porch and covered outdoor area
- 1 grass soccer field
- spaces for meditation
- 1 church

## CONTACTS

☎ +39 045 6211310 - For info and bookings at Tusini: ask for Sara by selecting 1 or Martina by selecting

✉ [accoglienza@salesianibardolino.it](mailto:accoglienza@salesianibardolino.it) - **Sara Passarini**

🌐 [salesianibardolino.it](https://salesianibardolino.it)

## BUSSOLENGO (VR)



### SHRINE OF OUR LADY OF PERPETUAL HELP

*Via Ospedale, 12 - 37012 Bussolengo*

*Congregation of the Redemptorist Fathers*

### HOW TO GET THERE

From Verona: take the SS12 towards Trento and continue on the SS11 to Bussolengo.

From Milan: take the A4 motorway towards Venice, exit at Sommacampagna and follow the signs to Bussolengo Hospital.

From Trento: take the A22 motorway towards Modena, exit at Affi. Continue on the SS450 towards Bussolengo.



The shrine is located next to the Orlandi Hospital in Bussolengo and has free parking for visitors.

If arriving by public transport, from Verona Porta Nuova Station take an ATV bus towards Bussolengo.

For updated schedules and routes, consult the ATV Verona website.

### OPENING HOURS

Weekdays: from 6:30 to 11:30 and from 16:00 to 20:00

Sundays and holidays: from 6:30 to 12:30 and from 16:00 to 20:00

### HOLY MASSES

Weekdays: 6:30 – 7:30 – 9:00 – 19:00 / Vigil Mass: 19:00

Sundays and holidays: 6:30 – 8:30 – 10:00 – 11:30 – 19:00

### CONFESSIONS

Weekdays: from 6:30 to 11:30 and from 16:00 to 19:00

Sundays and holidays: from 6:30 to 12:00 and from 17:00 to 19:00

### HOLY ROSARY

Every day at 18:30

### EUCCHARISTIC ADORATION

Thursday from 10:00 to 11:30

Saturday evening at 21:00

### CONTACTS

☎ +39 045.7150160 – **WhatsApp:** +39 331.4472488

✉ [info@santuariobussolengo.it](mailto:info@santuariobussolengo.it)

🌐 [santuariobussolengo.it](http://santuariobussolengo.it)



## CATHEDRAL OF SAINT MARY OF THE ASSUMPTION

Piazza Duomo, 21 – 37121 Verona

The church is part of the “Chiese Vive” network <https://www.chieseeverona.it/it/>

### HOW TO GET THERE

The historic center of Verona is largely a limited traffic zone (ZTL). To visit the Cathedral by car, it is advisable to park in one of the paid parking lots located outside the ZTL and continue on foot, such as Parcheggio Arena, Cittadella, or Piazza Isolo, all within a few minutes' walk from the Cathedral.



The church is about a 30-minute walk from Verona Porta Nuova Station.  
By bus: lines 70, 71, 73, 91, and LINE B stop near the Cathedral.

### OPENING HOURS

Weekdays: from 6:45 to 11:00 and from 17:00 to 19:30

Sundays and holidays: from 7:00 to 13:30 and from 17:30 to 19:30

### HOLY MASSES

Weekdays: 7:00 – 8:00 – 9:00 – 18:30

Saturday: 7:00 – 8:00 – 9:00 / Vigil Mass: 16:00 – 18:30

Sundays and holidays: 7:30 – 9:30 (in Latin with Gregorian chant)

11:00 – 12:30 – 18:30

### CONFESSIONS

Weekdays: from 9:00 to 11:00 and from 16:30 to 18:30  
Sundays and holidays: from 7:30 to 12:00 and from 18:30 to 19:30

### HOLY ROSARY

Every day at 18:00

### EUCCHARISTIC ADORATION

In the Church of St. Elena on Thursdays from 19:00 to 20:30

### CONTACTS

☎ **Rectory:** +39 045 595627 - **Sacristy:** +39 045 8008813

✉ [cattedralediverona@cattedralediverona.it](mailto:cattedralediverona@cattedralediverona.it)

🌐 [cattedralediverona.it](http://cattedralediverona.it)



## **BASILICA OF SAN ZENO MAGGIORE**

*Piazza San Zeno, 2 – 37123 Verona*

*The church is part of the “Chiese Vive” network [www.chieseeverona.it/it/](http://www.chieseeverona.it/it/)*

### **HOW TO GET THERE**

From Milan or Venice: take the A4 motorway and exit at Verona Sud.

From Trento or Modena: take the A22 motorway and exit at Verona Nord.

Follow the signs for the city center and then for San Zeno.

Parking available nearby, such as Piazza Corrubio and Piazza Pozza.

For those using public transportation, from Verona Porta Nuova train station take lines 31, 32, 33, or 91 towards San Zeno.

Get off at Piazza Corrubio or Piazza Pozza, both just a few minutes' walk from the basilica.



### **OPENING HOURS - CHIESE VIVE**

*Until February 28, 2025:*

Monday to Friday: 10:00 – 17:00

Saturday: 9:30 – 17:30

Sundays and holidays: 13:00 – 17:30

*From March 1 to November 28, 2025:*

Monday to Friday: 9:00 – 18:30

Saturday: 9:00 – 18:00

Sundays and holidays: 13:00 – 18:30

### **HOLY MASSES**

Weekdays: 8:00 – 18:30 (only Tuesday and Friday)

Vigil Mass: 18:30

Sundays and holidays: 8:00 – 10:00 – 11:30

### **CONFESSIONS**

Sunday morning: 9:30 – 12:00

### **EUCCHARISTIC ADORATION**

Friday from 8:45 to 9:45 except during summer months

### **CONTACTS**

☎ +39 045 8006120

✉ [parrocchiasanzenomaggiore@gmail.com](mailto:parrocchiasanzenomaggiore@gmail.com)

🌐 [parrocchiasanzeno.it](http://parrocchiasanzeno.it)



## **SANCTUARY OF SAINT GIOVANNI CALABRIA**

*Via San Zeno in Monte, 23 - Verona*

*Congregation of the Poor Servants of Divine Providence Don Calabria*

### **HOW TO GET THERE**

From Milan or Venice: take the A4 motorway and exit at Verona Sud.

From Trento or Modena: take the A22 motorway and exit at Verona Nord.

Follow signs for the center of Verona and then for San Zeno in Monte.

Once on Via San Zeno in Monte, parking is available near the sanctuary.

From Verona Porta Nuova railway station:

- Take bus line 21 or 22 towards Borgo Trento.
- Get off at the Via Mameli 5 stop.
- Continue on foot following the signs to San Zeno in Monte.

The sanctuary is also easily reachable from Porta Vescovo by following signs for Istituto Don Calabria.



### **OPENING HOURS**

Weekdays: from 7:00 to 19:30

Sundays and holidays: from 7:30 to 12:00 and from 15:00 to 19:00

### **HOLY MASSES**

Monday to Friday: 7:20 – 18:30

Saturday: 18:00 (Vigil Mass)

Sundays and holidays: 8:00 – 10:30 – 17:00

### **CONFESSIONS**

Every day: from 9:00 to 12:00 and from 16:00 to 18:00

### **HOLY ROSARY**

Every day at 18:00

### **EUCCHARISTIC ADORATION**

In the Adoration Chapel: weekdays from 9:00 to 12:00 and from 16:00 to 18:00;  
Saturday from 9:00 to 12:00.

Suspended in July and August

### **CONTACTS**

☎ +39 045 8052911

✉ [giacordi@hotmail.it](mailto:giacordi@hotmail.it) - [girlandamar@hotmail.com](mailto:girlandamar@hotmail.com)

🌐 [doncalabria.it](http://doncalabria.it)





## SHRINE OF THE IMMACULATE HEART OF MARY VOTIVE TEMPLE

*Piazzale XXV Aprile, 8 - 37138 Verona*

*Congregation of the Oratory of Saint Philip Neri of Verona*

### HOW TO GET THERE

The shrine is located in front of Verona Porta Nuova railway station square and is therefore easily reachable by train.

For those arriving by car:

From Milan or Venice: A4 motorway, exit Verona Sud.

From Trento or Modena: A22 motorway, exit Verona Nord.

Follow signs for the city center and then for Porta Nuova Station.

Paid parking is available near the sanctuary, such as Metropark Parking and Verona Porta Nuova Station Parking.



### OPENING HOURS

Monday to Friday: from 11:00 to 12:30 and from 16:00 to 18:00

Saturday: from 16:00 to 19:00

Sunday: from 8:00 to 12:30 and from 17:00 to 19:00

### HOLY MASSES

Weekdays: 12:00 and 17:00

Vigil: 18:00

Sundays and holidays: 8:30 – 10:00 – 11:15 – 18:00

### CONFESSIONS

Available during church opening hours

### HOLY ROSARY

Every day at 17:30

### EUCCHARISTIC ADORATION

On Thursday afternoon

### CONTACTS

☎ +39 045 569125

✉ [tempiovotivo@hotmail.com](mailto:tempiovotivo@hotmail.com)

🌐 [tempiovotivoverona.it](http://tempiovotivoverona.it)



## SHRINE OF OUR LADY OF LOURDES

Viale Dei Colli, 27 - 37128 Verona

Congregation of the Stigmatine Fathers

### HOW TO GET THERE

From Ponte Pietra, the sanctuary can be reached with a 20-minute walk uphill, offering scenic views of the city. The path climbs from the "Lasagna" route or Via Marsala to the Path of the Rosary.

To reach the sanctuary by car:

From Brescia: A4 motorway, exit Verona Sud, then follow signs to the city center.

From Trento: A22 motorway, exit Verona Nord, then follow signs to the city center.

A free parking area is available nearby.



### OPENING HOURS

Winter: from 7:30 to 12:00 and from 15:00 to 18:00

Summer: from 7:30 to 12:00 and from 15:00 to 19:00

The panoramic terrace remains accessible from 12:00 to 15:00

### HOLY MASSES

Winter: weekdays 8:00 – 17:00; vigil: 17:00

Sundays and holidays: 8:00 – 9:30 – 11:00 – 17:00

Summer: weekdays 8:00 – 18:00; vigil: 18:00

Sundays and holidays: 8:00 – 9:30 – 11:00 – 18:00

### CONFESSIONS

Winter: from 9:00 to 12:00 and from 15:00 to 17:00

Summer: from 9:00 to 12:00 and from 15:00 to 18:00

### HOLY ROSARY

Winter at 16:30; summer at 17:30

### EUCCHARISTIC ADORATION

Every day in the chapel of the Blessed Sacrament

### CONTACTS

☎ +39 045 8344946

✉ [armandfla@yahoo.fr](mailto:armandfla@yahoo.fr)





## **BASILICA OF SAINT THÉRÈSE OF THE CHILD JESUS**

*Via Volturno, 1 - 37135 Tombetta (VR)*

*Order of Discalced Carmelite Fathers (OCD)*

### **HOW TO GET THERE**

The sanctuary is located in the Tombetta district, near Veronafiere.

By car:

From Brescia: A4 motorway, exit Verona Sud. Follow signs to the city center along Viale del Lavoro.



At the third traffic light, in front of the main entrance of the Fair, turn right and continue for 200 meters.

From Trento: A22 motorway, exit Verona Nord. Follow signs to the city center, then to the Verona Fair. Continue as above from Viale del Lavoro.

### **OPENING HOURS**

Every day (except Monday) from 6:45 to 12:00 and from 15:30 to 19:30

Monday: closed from 8:00 to 16:00

### **HOLY MASSES**

Weekdays: 7:00 – 8:00 – 9:00 – 10:00 – 16:30 – 18:30

Monday only: 7:00 – 16:30 – 18:30

Vigil Mass: 16:30 – 18:30

Sundays and holidays: 7:30 – 8:30 – 9:30 – 10:30 – 11:30 – 16:30 – 18:30

During July and August, the 16:30 weekday Mass is suspended

### **CONFESSIONS**

Always during the Basilica's opening hours

### **HOLY ROSARY**

Every day at 16:00

### **EUCCHARISTIC ADORATION**

Every Thursday from 17:00 to 18:00

### **CONTACTS**

☎ +39 045 500266

✉ [info@santateresaverona.it](mailto:info@santateresaverona.it)

🌐 [santateresaverona.it](http://santateresaverona.it)



Via Francesco Calsone, 5 - 25087 Salò BS  
Tel. +39 0365 290411 - [info@lagodigarda.it](mailto:info@lagodigarda.it)

[comunitadelgarda.it](http://comunitadelgarda.it)

